



Faster, More Reliable & Power Efficient Networking Solutions



Chris Carroll
Sr. Federal Account Executive
Phil Exel
Sr. Federal Systems Engineer

Reliable HPCC Network infrastructure Federal Space DoE/DoD



Data Center/HPCC



FTOS

LAN Core



FTOS

E-Series - Exascale

5 Tbps back plane capacity

1260 Gbe, Line Rate

140 10GbE Line Rate

Wiring Closet

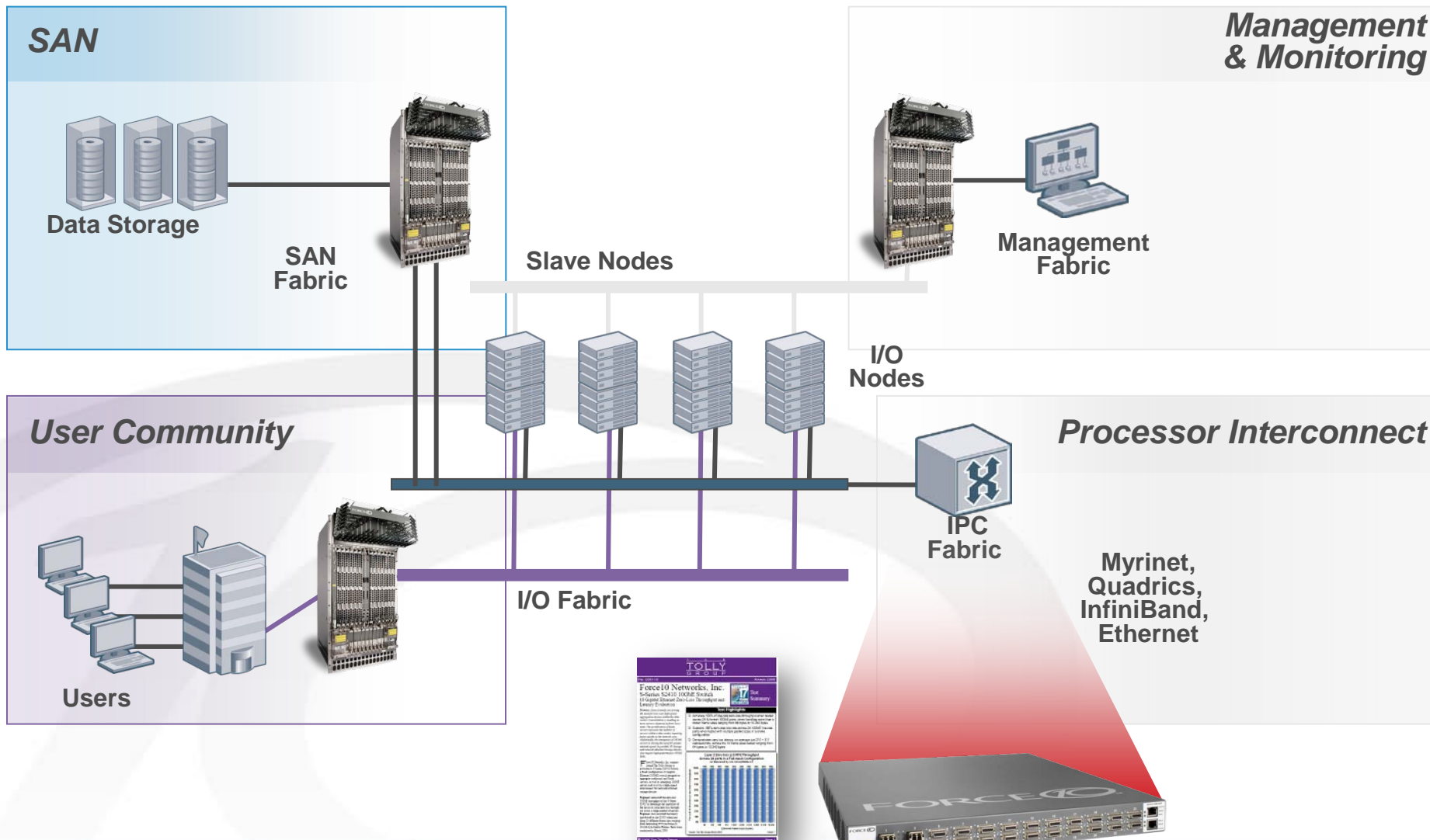


FTOS



E-Series Positioning

Large Cluster Topology



Force10's E-Series In Computing Environments



- **Guaranteed non-blocking architecture delivering deterministic—congestion free—performance under full load**
- **140 Line Rate and 560 4:1 10GbE 1/2 Rack**
- **Purpose built for N server & storage endpoints connecting to 1**
 - Different performance characteristics to Enterprise LAN Switches
 - Very large buffers to avoid packet loss
 - Variable packet buffering up to 55ms
 - WRED and WFQ congestion control mechanisms
 - Tunable latency
- **Delivers simpler topologies through integrated Layer 2/3**
 - Unique 3-CPU architecture
- **Hardened highly-reliable modular Net BSD Operating System (FTOS)**



E-Series Exascale	E1200	E600
Rack Height	1/2	1/3
Line-rate GbE	1260	630
Total GbE	1260	630
Line-rate 10 GbE	140	70
Total 10 GbE	560	330
40 / 100 GbE Ready	Yes	Yes

Force10's C-Series In Computing Environments



- Designed to drive down cost of aggregation
 - High 10 GbE & 1 GbE density
 - Lower TCO with 64 line-rate 10 GbE ports in 1/3 rack chassis
 - High density all-in-one cluster for Ethernet optimized applications
- Delivers simpler topologies through integrated Layer 2 and Layer 3 functionality
- Hardened highly-reliable modular Operating System (FTOS)
 - Unix-like kernel



C-Series	C300	C150
Rack Height	1/3	1/4
Line-rate GbE	384	192
Total 10 GbE	64	32
40 GbE ready	Yes	Yes

Force10's S-Series In Computing Environments



- **Top-of-rack stackable switches designed to drive down edge aggregation cost**
 - **Low Cost 1-RU devices for cluster aggregation**
 - **All offer high capacity uplinks**
 - **S2410 24 Port 10Gb CX4 or XFP**
 - **S50 & S25 10/100/1000 MB, SFP**
 - **2 x 10 GbE expansion slots**
 - **Hardened highly-reliable modular Operating System (FTOS)**
- Found in many Cluster solution IBM
Sun/Oracle and Dell**

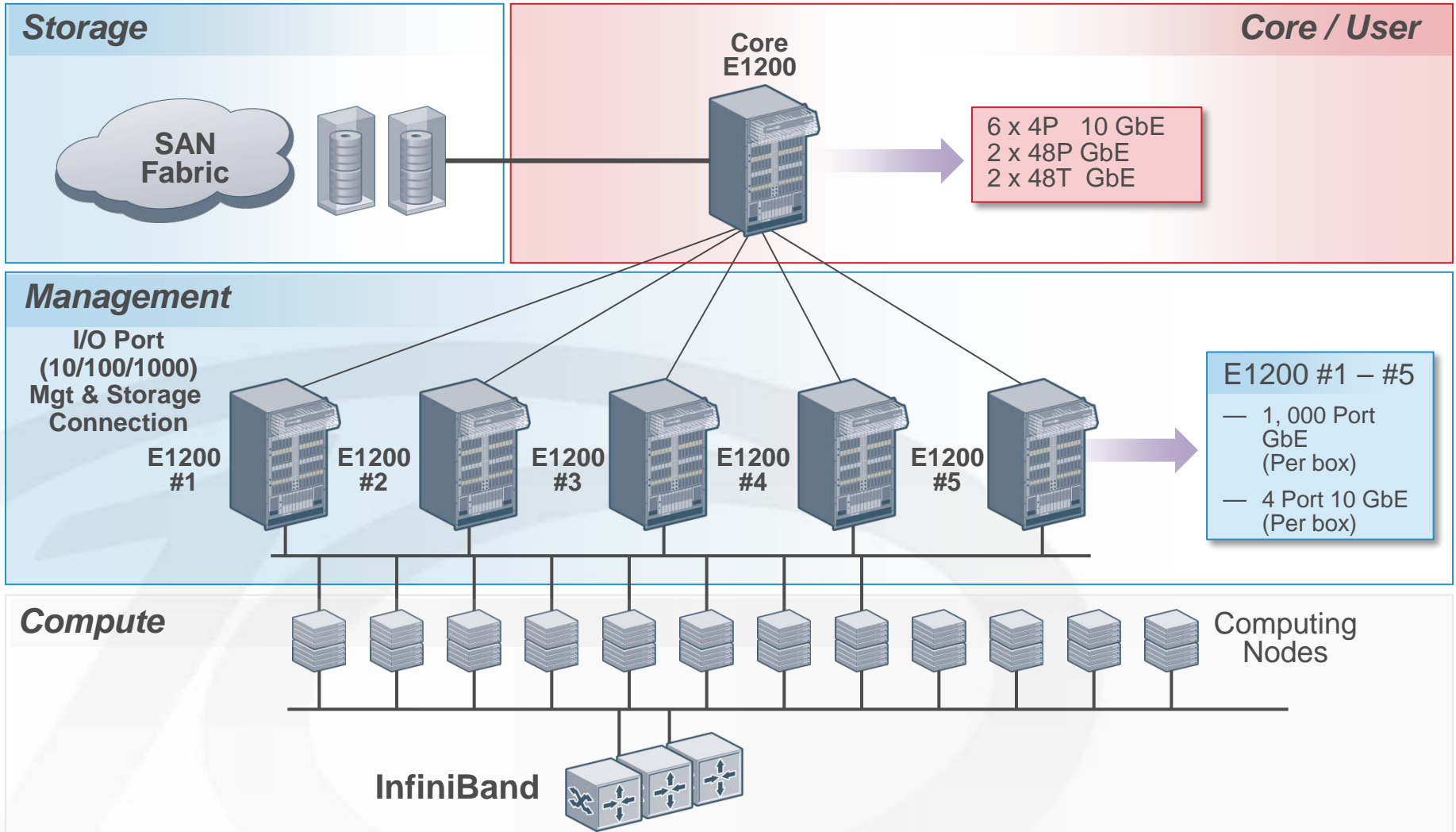
**S2410 – 24 Port 10Gb
Cut-through L2 - 1Ru**



**S50 & S25 24/48 Port
10/100/1000 - 1Ru**



Example of Force10 Solution 6K CPU System Storage - I/O - Management



Thank You

FORCE10™